



# S100P mouse mAb(ABT229)

<b>Catalog No</b>	YP-Ab-15622
<b>Isotype</b>	IgG
<b>Reactivity</b>	Human
<b>Applications</b>	IHC;IF
<b>Gene Name</b>	S100P S100E
<b>Protein Name</b>	S100P
<b>Immunogen</b>	Synthesized peptide derived from human S100P
<b>Specificity</b>	The antibody can specifically recognize human S100P protein.
<b>Formulation</b>	Liquid in PBS containing 50% glycerol, 0.5% BSA and 0.124% sodium azide.
<b>Source</b>	Mouse, Monoclonal/IgG1, Kappa
<b>Purification</b>	The antibody was affinity-purified from mouse ascites by affinity-chromatography using specific immunogen.
<b>Dilution</b>	IHC-p 1:100-500, IF 1:100-500
<b>Concentration</b>	1 mg/ml
<b>Purity</b>	≥90%
<b>Storage Stability</b>	-20°C/1 year
<b>Synonyms</b>	Protein S100-P (Protein S100-E;S100 calcium-binding protein P)
<b>Observed Band</b>	
<b>Cell Pathway</b>	Nucleus. Cytoplasm. Cell projection, microvillus membrane. Colocalizes with S100PBP in the nucleus. Colocalizes with EZR in the microvilli in a calcium-dependent manner.
<b>Tissue Specificity</b>	Detected in all of the tissues except brain, testis and small intestine, expression level is higher in placenta, heart, lung, skeletal muscle, spleen and leukocyte. Up-regulated in various pancreatic ductal adenocarcinomas and pancreatic intraepithelial neoplasias.
<b>Function</b>	miscellaneous:This protein binds two calcium ions.,similarity:Belongs to the S-100 family.,similarity:Contains 2 EF-hand domains.,subcellular location:Colocalizes with S100PBP in the nucleus.,subunit:Homodimer. Interacts with S100PBP and S100Z.,tissue specificity:Up-regulated in various pancreatic ductal adenocarcinomas and pancreatic intraepithelial neoplasias.,
<b>Background</b>	The protein encoded by this gene is a member of the S100 family of proteins containing 2 EF-hand calcium-binding motifs. S100 proteins are localized in the cytoplasm and/or nucleus of a wide range of cells, and involved in the regulation of a number of cellular processes such as cell cycle progression and differentiation. S100 genes include at least 13 members which are located as a cluster on chromosome 1q21; however, this gene is located at 4p16. This protein, in addition to binding Ca <sup>2+</sup> , also binds Zn <sup>2+</sup> and Mg <sup>2+</sup> . This protein may play a

role in the etiology of prostate cancer. [provided by RefSeq, Jul 2008],

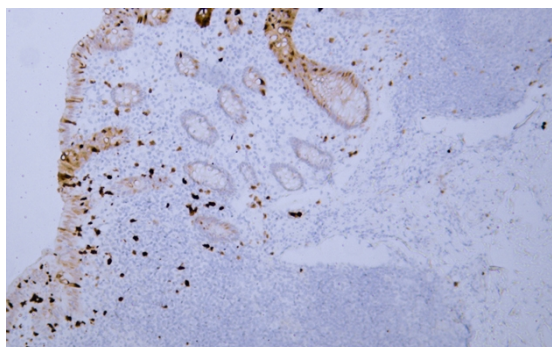
**matters needing attention**

Avoid repeated freezing and thawing!

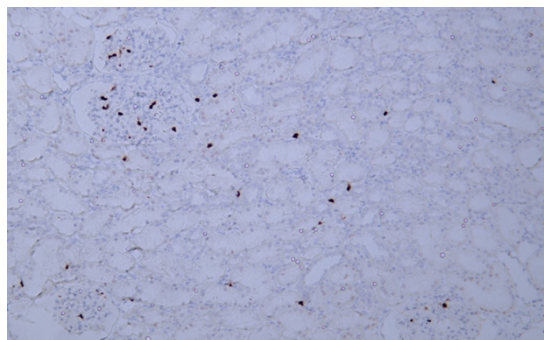
**Usage suggestions**

This product can be used in immunological reaction related experiments. For more information, please consult technical personnel.

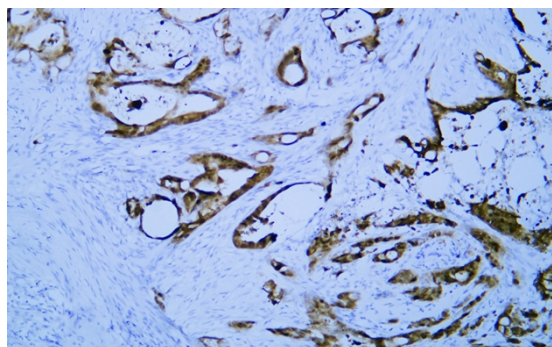
## Products Images



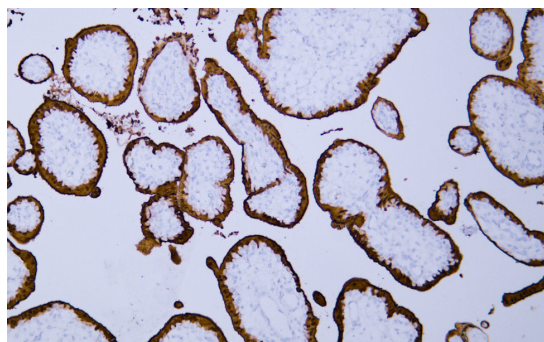
Human appendix tissue was stained with Anti-S100P (ABT229) Antibody



Human kidney tissue was stained with Anti-S100P (ABT229) Antibody



Human pancreatic cancer tissue was stained with Anti-S100P (ABT229) Antibody



Human placenta tissue was stained with Anti-S100P (ABT229) Antibody